

### WHERE DOES THE BUS GO?

The bus loops through the communities of Crandon, Stone Lake, Laona, Wabeno and Carter three times a day and then returns. Residents of Blackwell please call ahead to schedule a pick up and the bus will loop through Blackwell during the scheduled daily route. Please call the transit dispatcher for ADA accommodations and deviations from designated bus stops.

### WHO CAN RIDE THE BUS?

The transit bus is open to the general public and handicapped accessible.

### DAYS AND HOURS OF OPERATION:

Monday - Thursday from 6am to 5:50pm  
Please review the detailed schedule.

### HOW DO I RIDE THE BUS?\*

1. View the route map.
2. Determine which route will get you where you want to go.
3. Find the closest stop to your location and identify the pick-up and drop-off times. Times are located in this schedule and on the bus stop signage.
4. If you cannot make it to a stop, drivers will pick up riders at safe locations in residential areas along the route.
5. Signal the driver by waving when the bus is headed your way to let the driver know you wish to get on.

\*Call the transit dispatcher with any questions at 715-478-4779 or go to [transit.fcpotawatomi.com](http://transit.fcpotawatomi.com).

### FEE FOR DAILY PASS:

Youth (Ages 0-5) Free

General pass (Ages 6-54) \$1.00

Elder (age 55+)/ Handicapped \$0.50

**Enter bus with exact fare.** Drivers do not carry change.

\*Rules for riders are located on the bus and at [transit.fcpotawatomi.com](http://transit.fcpotawatomi.com).

Failure to follow the rules and regulations of the FCPC buses may result in a suspension or loss of ridership privileges.



## FOREST COUNTY POTAWATOMI TRANSIT

### CONTACT US:

If you have any questions or would like more information, please contact the Transit Dispatcher located at the Fleet Department at 715-478-4779.

[transit.fcpotawatomi.com](http://transit.fcpotawatomi.com)

[www.facebook.com/fcpotawatomi](http://www.facebook.com/fcpotawatomi)

<https://members.fcpotawatomi.com>



[FCPC]

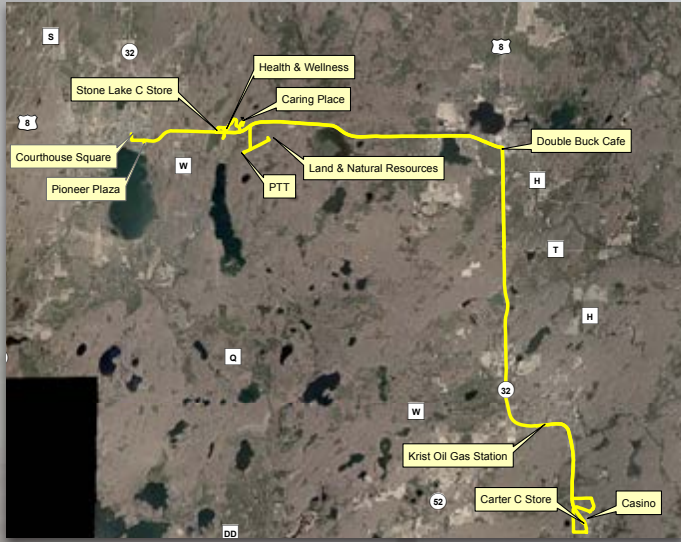
# PUBLIC transit



## VISION

To increase mobility and access to services, social gatherings, employment, and entertainment thus improving the economic, environmental and overall health of the community.

# BUS ROUTE STOPS & TIMES



# DAILY ROUTES CRANDON TO CARTER

MONDAY-THURSDAY			
<b>Courthouse Square (E. Polk St.)</b>	9am	11am	1pm
<b>Stone Lake Health &amp; Wellness</b>	9:15am	11:15am	1:15pm
<b>Laona Double Buck Café</b>	9:25am	11:25am	1:25pm
<b>Wabeno Krist Oil</b>	9:40am	11:40am	1:40pm
<b>Carter C-Store</b>	9:45am	11:45am	1:45pm
<b>Carter Casino</b>	9:50am	11:50am	1:50pm

# DAILY ROUTES CARTER TO CRANDON

MONDAY-THURSDAY			
<b>Carter C-Store</b>	9:45am	11:45am	1:45pm
<b>Carter Casino</b>	9:50am	11:50am	1:50pm
<b>Carter - Shiner Lake Rd/Old 32</b>	9:55am	11:55am	1:55pm
<b>Carter-Industrial/ Good Heart Ln.</b>	10am	12pm	2pm
<b>Carter-Sugarbush/ Eagle Ln.</b>	10am	12pm	2pm
<b>Wabeno Krist Oil</b>	10:05am	12:05pm	2:05pm
<b>Laona - Double Buck Café</b>	10:20am	12:20pm	2:20pm
<b>Stone Lake Caring Place/ Housing</b>	10:35am	12:35pm	2:35pm
<b>Stone Lake Everybody's Rd.</b>	10:35am	12:35pm	2:35pm
<b>Stone Lake Health &amp; Wellness</b>	10:40am	12:40pm	2:40pm
<b>Stone Lake C-Store</b>	10:45am	12:45pm	2:45pm
<b>Stone Lake Young's Lane</b>	10:50am	12:50pm	2:50pm
<b>Stone Lake Traveling Times</b>	10:55am	12:55pm	2:55pm
<b>Stone Lake LNR/Gte Ga Nēs</b>	11am	1pm	3pm
<b>Crandon Pioneer Plaza</b>	11:05am	1:05pm	3:05pm
<b>Crandon Courthouse Square (E. Polk St.)</b>	11:10am	1:10pm	3:10pm



# WORK ROUTE

CRANDON TO STONE LAKE 6:30-6:55am Arrival 5-5:25pm Drop Off	CARTER TO STONE LAKE 6:30-6:55am Arrival 5-5:25pm Drop Off
<b>MONDAY-THURSDAY</b>	<b>MONDAY-THURSDAY</b>
<b>Crandon Courthouse Square (E. Polk St.)</b> 6:30am 5:25pm	<b>Carter C-Store</b> 6am 5:50pm
<b>Stone Lake Health &amp; Wellness</b> 6:40am 5:15pm	<b>Carter Casino</b> 6:05am 5:45pm
<b>Stone Lake Executive Building</b> 6:50am 5:05pm	<b>Wabeno Krist Oil</b> 6:10am 5:40pm
<b>Stone Lake Caring Place/Housing</b> 6:55am 5pm	<b>Laona Double Bucks Café</b> 6:25am 5:25pm
	<b>Stone Lake LNR/Gte Ga Nes Area</b> 6:40am 5:15pm
	<b>Stone Lake Caring Place/Housing</b> 6:45am 5:10pm
	<b>Stone Lake Executive Building</b> 6:50am 5:05pm
	<b>Stone Lake Health &amp; Wellness</b> 6:55am 5pm

**PARK AND RIDE**  
Parking is available at all of the work route stops.